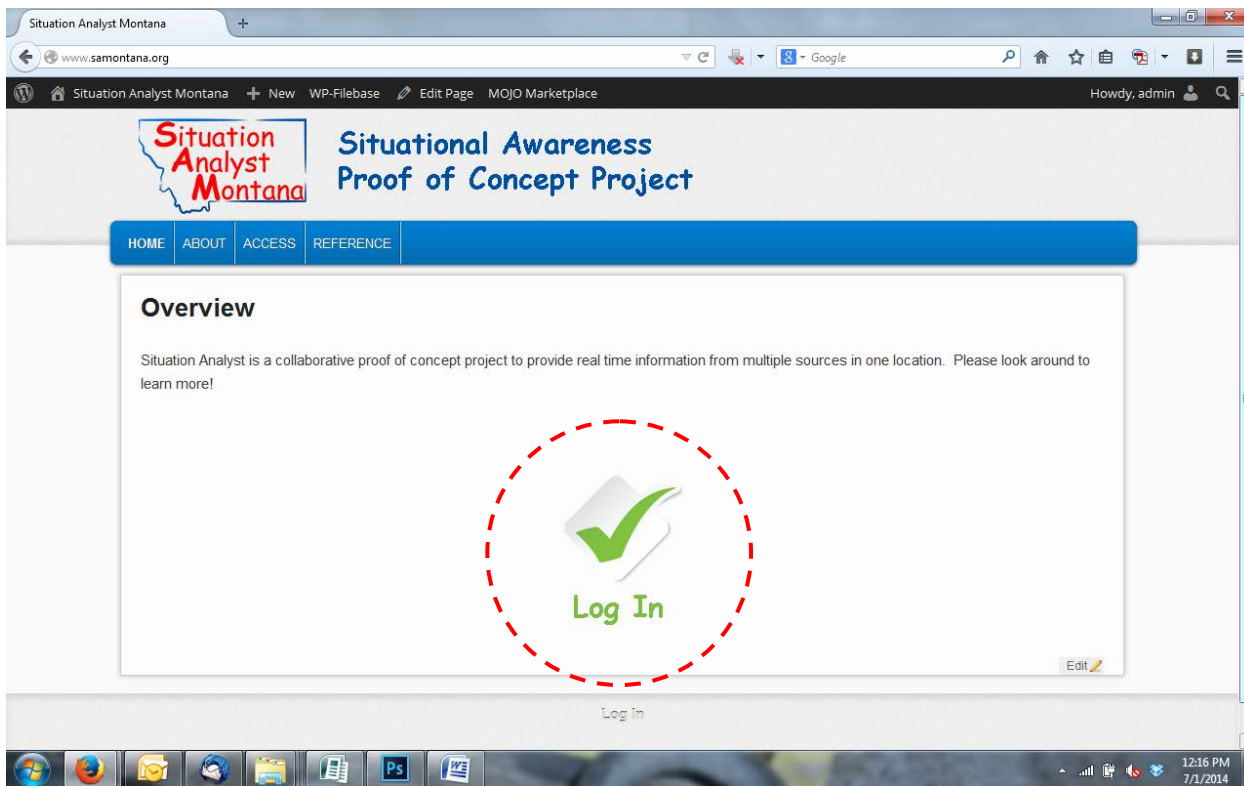


Quick Start Guide

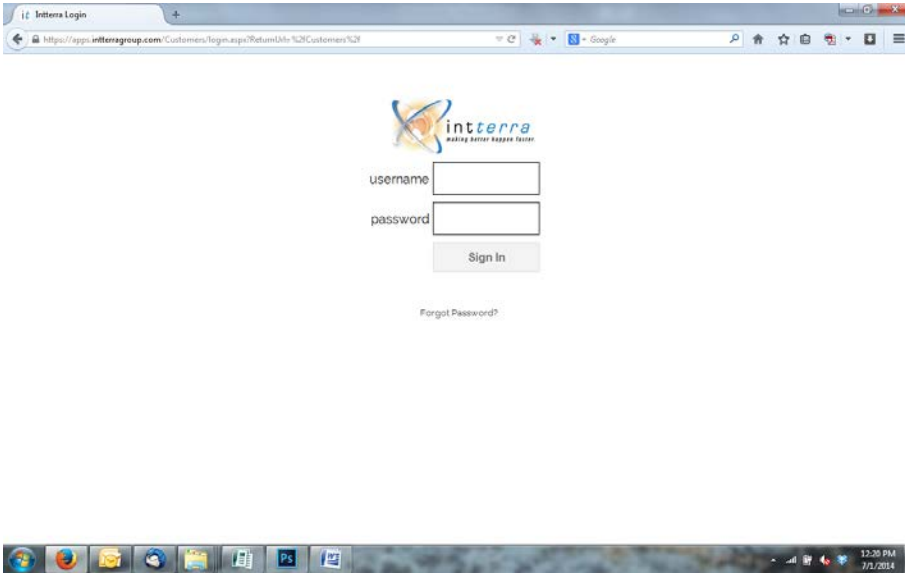
SAMontana.org



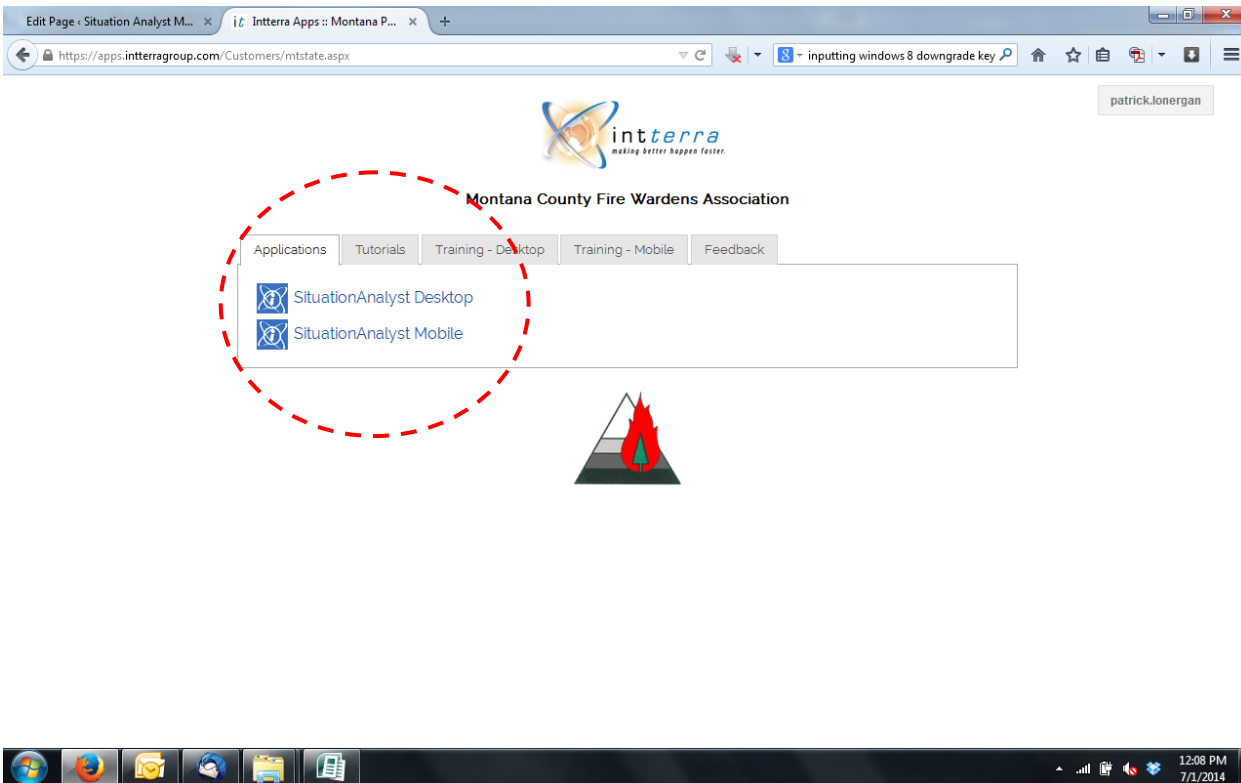
Visit <http://SAMontana.org> to begin and select "Log In". The full reference material is available on this website under "Reference".



You will then be prompted for your SAM login information.

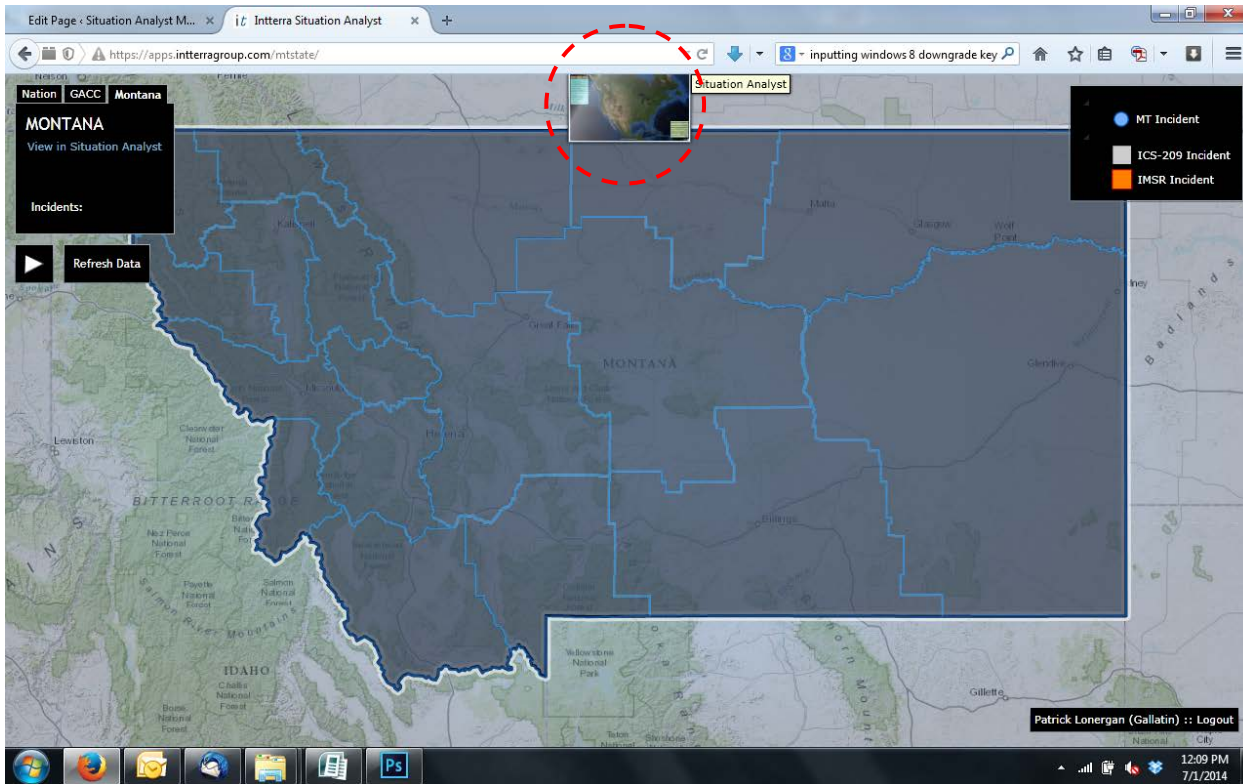


After logging in, you will appear at the landing page below. At this point you will need to select the “Desktop” version if you are using a computer, or “Mobile” if utilizing a smart phone or tablet. **This guide will use the desktop interface **

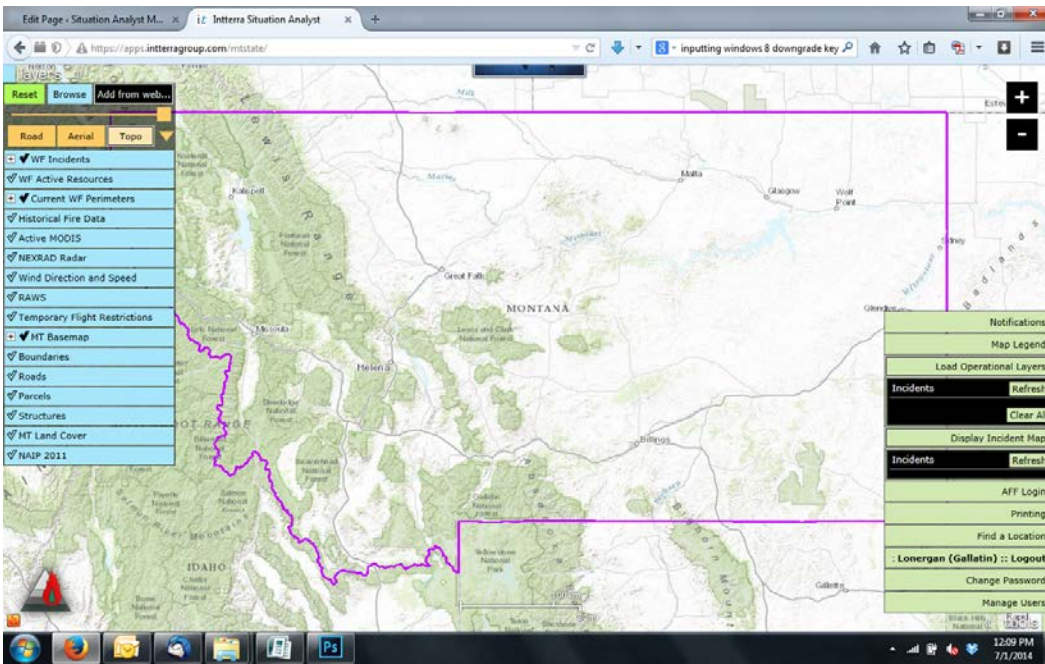


Upon logging in you will be in Command View. This may take a little while to load. Command View provides you a view only overview of active incidents in Montana (and the US).

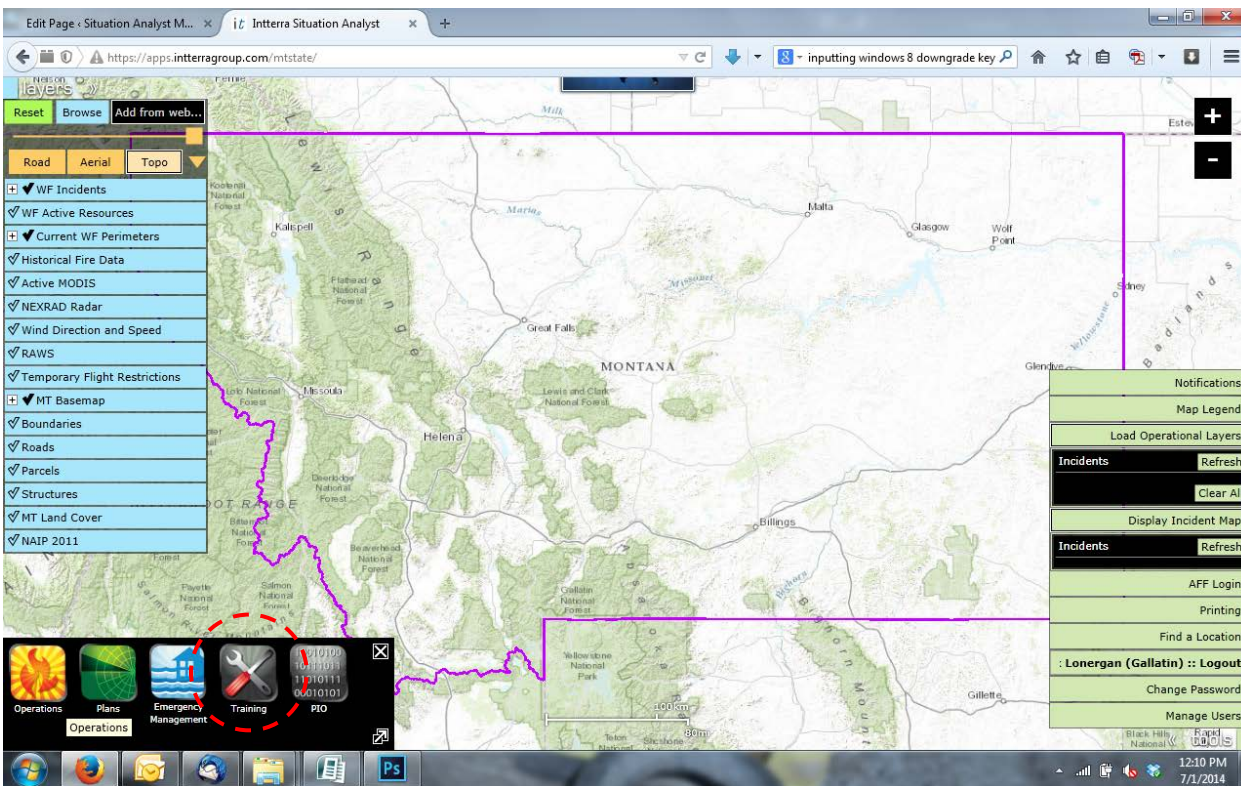
You now need to switch to Situation Analyst View to learn to use SAM. To do so, move your mouse to the top center of the window and the tab will expand down. Now click on the expanded tab.



You are now in Situation Analyst View as seen below. This is where you can customize your view, toggle data on and off, and edit maps. By default you will always be in the Operations View State after logging in. This is the live area with real incidents and not where you play around learning the system.



To enter the Training View State (where you play at without causing issues), click the Fire Warden's Logo on the bottom left corner. A row of View States will appear, select Training.



After clicking on Training, you will then be in the Training View State. When in this state you will notice that the Training Icon will appear below the Fire Warden's Logo and the layers on the rights will say Training.

Browser window: Edit Page - Situation Analyst M... | iC Interra Situation Analyst | https://apps.interragroup.com/mtstate/

Map interface showing a satellite view of Montana, Idaho, and Wyoming. A purple outline highlights a specific region in the western part of Montana. A red dashed circle highlights a 'Load Training Layers' panel on the right side of the map.

Left Panel (Layers):

- Reset
- Browse
- Add from web...
- Road
- Aerial
- Topo
- WF Incidents
- WF Active Resources
- Current WF Perimeters
- Historical Fire Data
- Active MODIS
- NEXRAD Radar
- Wind Direction and Speed
- RAWS
- Temporary Flight Restrictions
- MT Basemap
- Boundaries
- Roads
- Parcels
- Structures
- MT Land Cover
- NAIP 2011

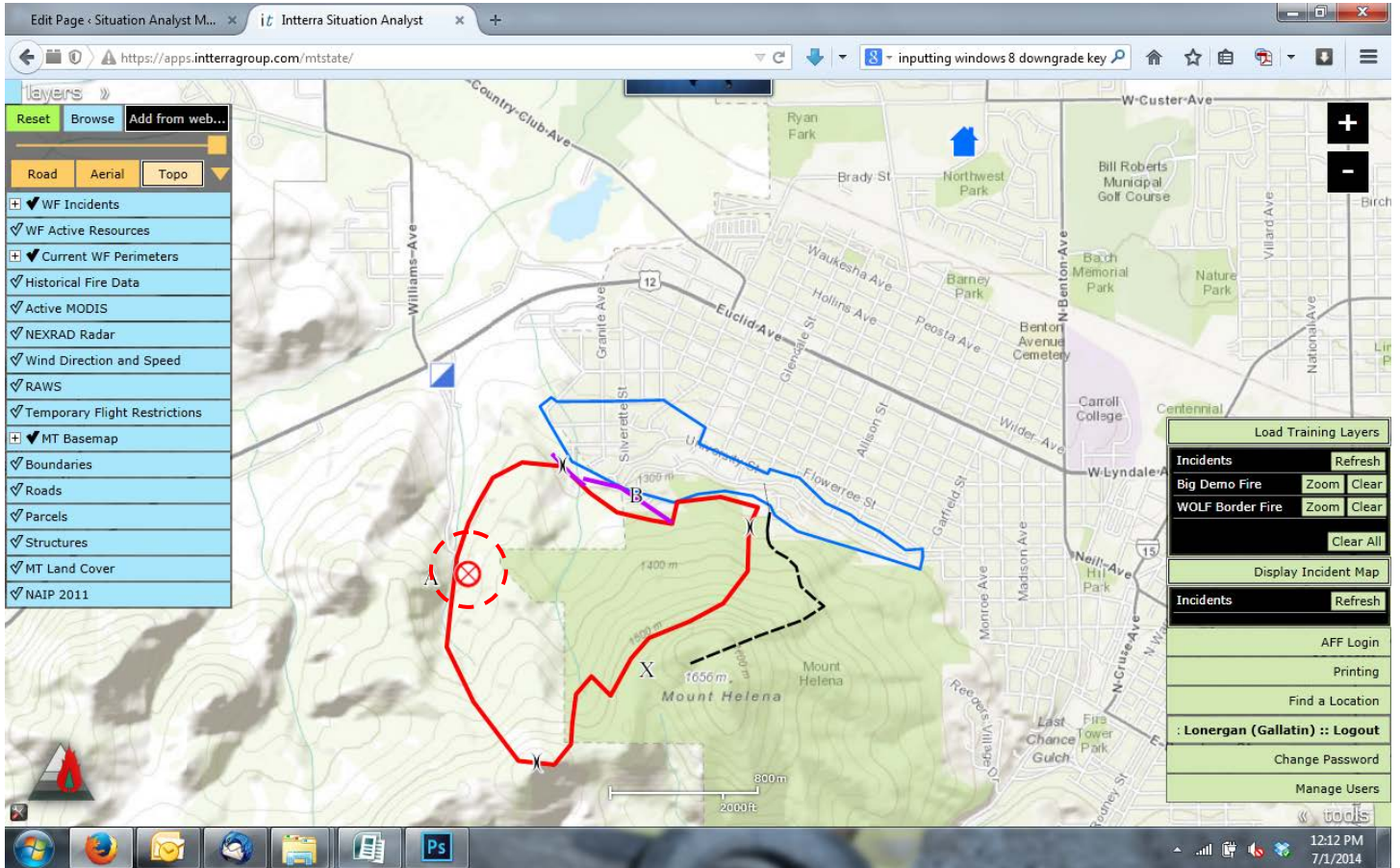
Right Panel (Load Training Layers):

Load Training Layers	
Incidents	Refresh
Big Demo Fire	Zoom Clear
WOLF Border Fire	Zoom Clear
Clear All	
Display Incident Map	
Incidents	Refresh
AFF Login	
Printing	
Find a Location	
: Lonergan (Gallatin) :: Logout	
Change Password	
Manage Users	

Windows taskbar at the bottom shows icons for Internet Explorer, Outlook, and Photoshop (Ps). The system tray on the right shows the time as 12:11 PM on 7/1/2014.

Now that you are in the Training View State, you can play at your heart's content to learn the system.

The #1 first thing you always do when creating an incident (real or training) is to create and place an Origin Symbol. This is what generates a new incident in the system and links things together. So, always create an Origin, even if it isn't geographically correct.



System Manuals are available at: http://www.samontana.org/?page_id=32